

GROUND FLOOR

Job	XXXXX
Drawing No.	16090618 Floor Plans
Version	1.0
Publication Date	22/06/2018
Plot Scale	1:100
Sheet Size	A1 Portrait
Sheet	1 of 4
Survey Date(s)	30/05/2018, 31/05/2018
Surveyor	ST
Drawn by	JW
Checked by	ST

STANDARD REFERENCE	
Datum Used	Newlyn
Survey translated to ODN & OSGB36(15) by non-scaled best fit to GNS3 RTK of controls (GNS3 accuracy +/- 100mm msee).	
Survey Station Shown Thus:	
Foul Water Drainage	
Storm Water Drainage	
Water Mains	
Gas Mains	
Electricity Cable	
British Telecom Cable	

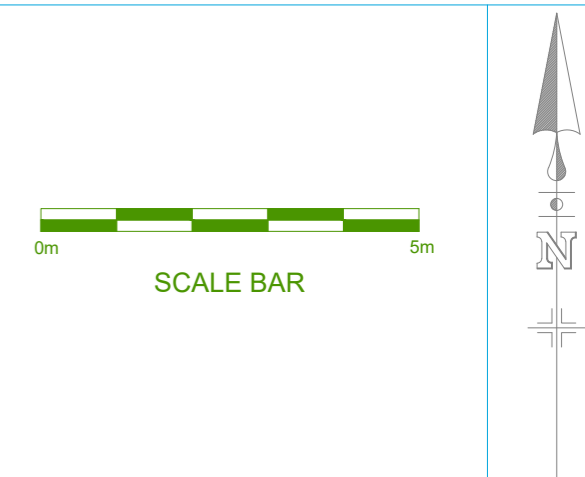
ABBREVIATIONS	
BT	British Telecom IC
CATV	Television Cable Pit
CE	Cleaning Eye
CL	Cover Level
dh	Depth
dh	Door Height
elec	Electricity Services
ER	Earth Rod
FA	Fire Alarm
FL	Floor Level
G	Gully
IC	Inspection Chamber
IL	Invert Level
MH	Manhole
RWP	Rain Water Pipe
SC	Stop Cock
SV	Stop Valve
SH	Service Hoisting
SV	Stop Valve
SVP	Soil & Vent Pipe
SW	Storm Water
Tr	Trunking
U	Underdrain
VP	Vent Pipe
WM	Water Meter
WO	Water Wash Out
WP	Waste Pipe

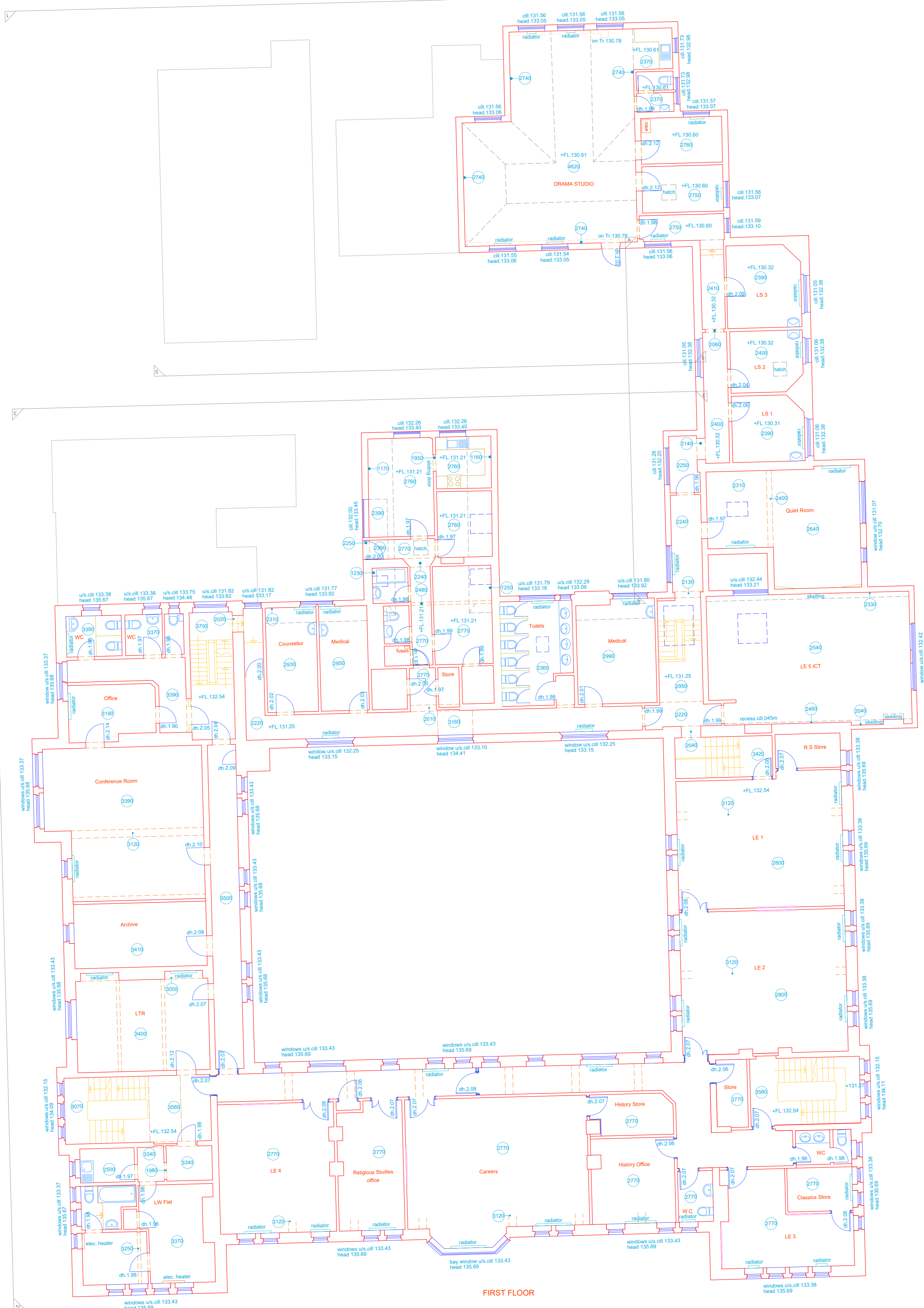
STATION SCHEDULE		
Station	Easting(m)	Northing(m)
1	553375.890	156505.766
2	553388.942	156505.011
3	553408.088	156497.142
5	553433.652	156444.902
11	553377.302	156467.262
30	553360.874	156233.536
31	553362.086	156287.288
32	553457.406	156505.096
33	553462.741	156503.699
34	553362.165	156300.619
40	553368.464	156303.311
42	553362.165	156300.619
43	553383.279	156323.731
44	553333.543	15627.015

NOTES

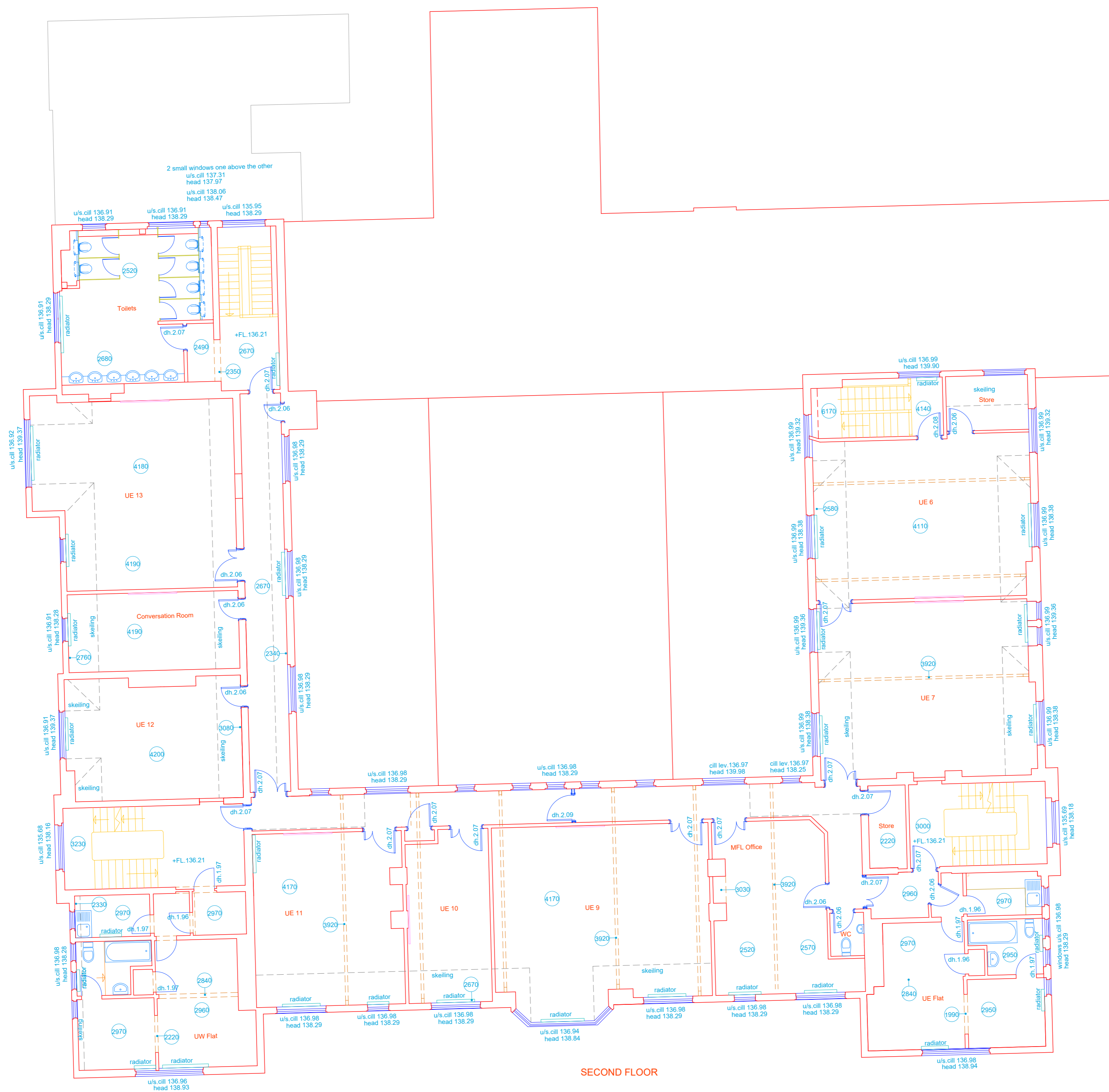
This drawing incorporates detail from drawing 15980318 which in turn includes older survey detail. For an inclusion history please see detailed notes in drawing 15980318.

This drawing is accompanied by a Site Plan and Elevations. Please see, drawings 16090618 Site Plan and 16090618 Elevations respectively.





FIRST FLOOR



SECOND FLOOR

Job	XXXXX
Drawing No.	15980318 Floor Plans
Version:	1.0
Publication Date:	22/06/2018
Plot Scale:	1:100
Sheet Size:	A1 Portrait
Sheet:	3 of 4
Survey Date(s):	30/05/2018, 31/05/2018
Surveyor:	ST
Drawn by:	JW
Checked by:	ST

STANDARD REFERENCE	
Datum Used	Newlyn
Survey translated to ODN & OSGB36(15) by non-scaled best fit to GNS3 RTK of controls (GNS3 accuracy +/- 100mm msee).	
Survey Station Shown Thus:	
Foul Water Drainage	
Storm Water Drainage	
Water Mains	
Gas Mains	
Electricity Cable	
British Telecom Cable	
True north direction shown is indicative only. The details shown hereon relating to all underground services are as obtained by normal above-ground survey observation and methods and where indicated also by reference to available utility records. Although all reasonable efforts have been made no guarantee can be given for the completeness or accuracy of this information.	

ABBREVIATIONS	
BT	British Telecom IC
CATV	Television Cable Pit
CE	Clearing Eye
CL	Cover Level
CP	Stop Cock
SH	Service Housing
SV	Stop Valve
elec	Electricity Services
ER	Earth Rod
FA	Fire Alarm
FL	Fire Hydrant
FL	Floor Level
G	Gully
IC	Inspection Chamber
IL	Invert Level
MH	Manhole
RWP	Rain Water Pipe
SC	Stop Cock
SH	Service Housing
SV	Stop Valve
SVP	Soil & Vent Pipe
SW	Storm Water
Tr	Trunking
US	Underdrain
VP	Vent Pipe
WM	Water Meter
WO	Water Wash Out
WP	Waste Pipe

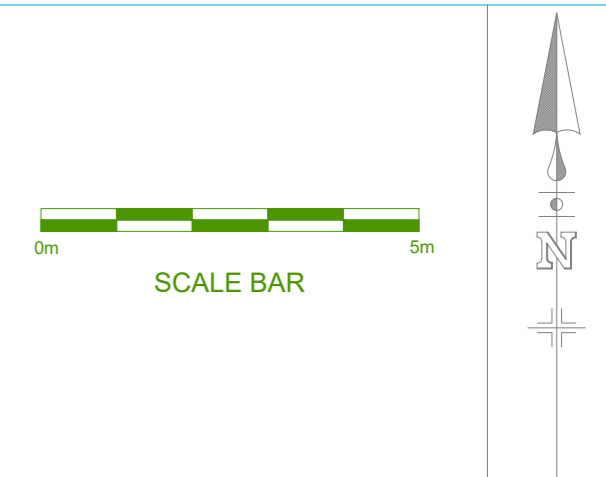
STATION SCHEDULE			
Station	Easting(m)	Northing(m)	Level(m)
1	553375.890	156650.766	126.523
2	553388.942	156655.011	126.935
3	553400.088	156647.142	126.543
5	553433.652	156644.902	126.372
11	553377.302	156667.262	125.970
30	553360.874	156623.536	127.425
31	553362.086	156687.288	128.228
32	553427.170	156686.986	128.348
33	553462.741	156593.699	128.112
34	553457.408	156620.670	127.100
40	553368.464	156630.331	127.393
42	553362.165	156630.612	127.413
43	553383.279	156632.731	127.136
44	553333.543	156627.015	126.244

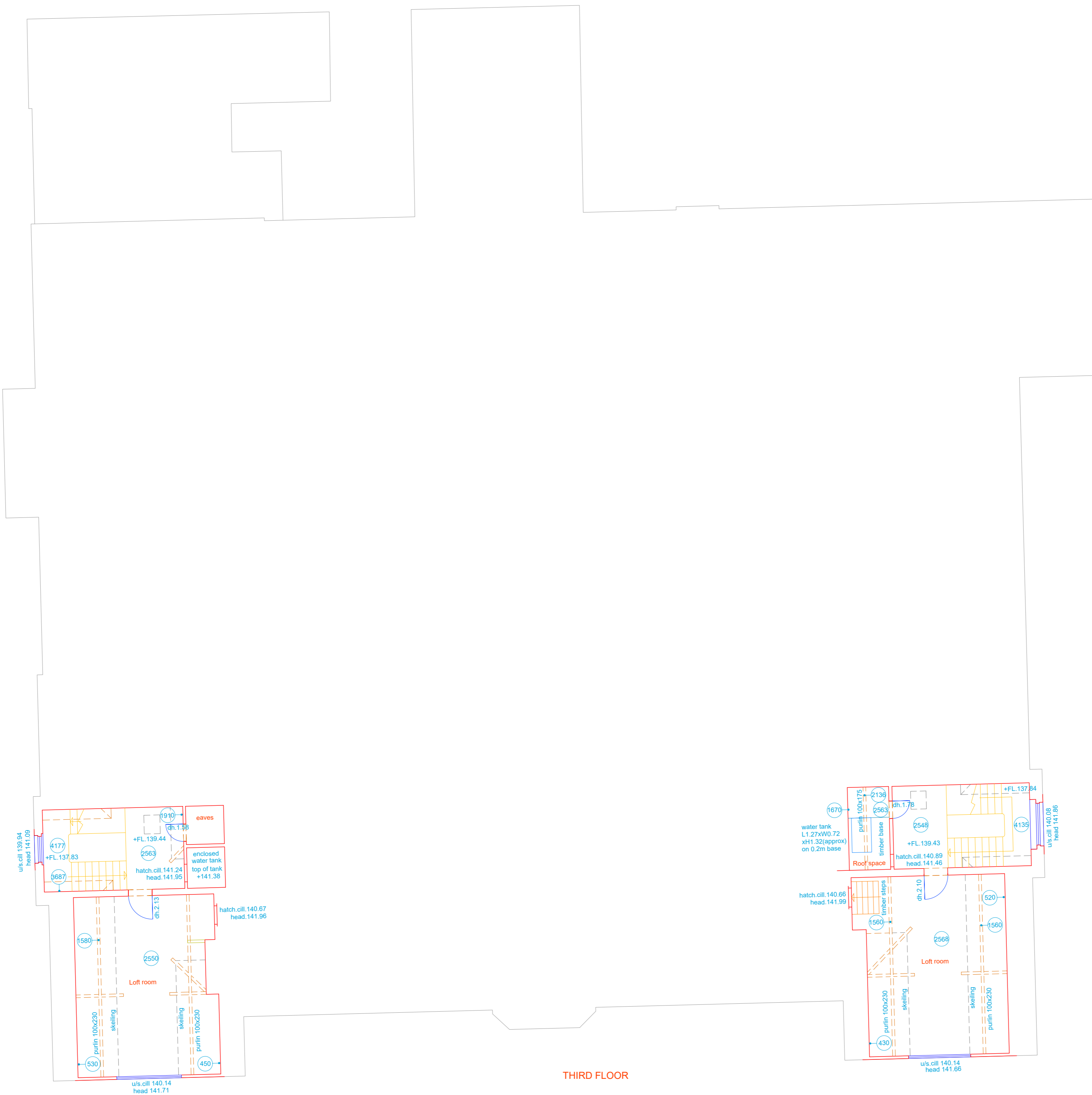
NOTES

This drawing incorporates detail from drawing 15980318 which in turn includes older survey detail. For an inclusion history please see detailed notes in drawing 15980318.

This drawing is accompanied by a Site Plan and Elevations. Please see, drawings 16090618 Site Plan and 16090618 Elevations respectively.

Second floor detail is unchanged from drawing 15980318.





Job	XXXXX
Drawing No.	15980318 Floor Plans
Version	1.0
Publication Date	22/06/2018
Plot Scale	1:100
Sheet Size	A1 Portrait
Sheet	4 of 4
Survey Date(s)	30/05/2018, 31/05/2018
Surveyor	ST
Drawn by	JW
Checked by	ST

STANDARD REFERENCE	
Datum Used	Newlyn
Survey translated to ODN & OSGB36(15) by non-scaled best fit to GNS3 RTK of controls (GNS3 accuracy +/- 100mm msee).	
Survey Station Shown Thus:	
Foul Water Drainage	
Storm Water Drainage	
Water Mains	
Gas Mains	
Electricity Cable	
British Telecom Cable	
True north direction shown is indicative only. The details shown hereon relating to all underground services are as obtained by normal above-ground survey observation and methods and where indicated also by reference to available utility records. Although all reasonable efforts have been made no guarantee can be given for the completeness or accuracy of this information.	

ABBREVIATIONS	
BT	British Telecom IC
CATV	Television Cable Pit
CE	Clearing Eye
CL	Cover Level
cp	Depth
dh	Door Height
elec	Electricity Services
ER	Earth Rod
FA	Fire Alarm
FH	Fire Hydrant
FL	Floor Level
G	Gully
IC	Inspection Chamber
IL	Invert Level
MH	Manhole
RWP	Rain Water Pipe
SC	Stop Cock
SH	Service Housing
SV	Stop Valve
SVP	Soil & Vent Pipe
SW	Storm Water
Tr	Trunking
U	Underdrain
VP	Vent Pipe
WM	Water Meter
WO	Water Wash Out
WP	Waste Pipe

STATION SCHEDULE			
Station	Eastings(m)	Northings(m)	Level(m)
1	553375.890	155650.766	126.523
2	553388.942	155655.011	126.935
3	553400.088	155647.142	126.543
5	553433.652	155644.902	126.372
11	553377.303	155667.262	125.670
30	553360.874	155623.536	127.425
31	553362.086	155687.288	128.228
32	553427.170	155686.986	128.348
33	553462.741	155593.699	128.112
34	553457.406	155620.670	127.100
40	553368.464	155630.331	127.393
42	553362.165	155630.612	127.413
43	553383.279	155632.731	127.136
44	553333.543	155627.015	126.244

NOTES

This drawing incorporates detail from drawing 15980318 which in turn includes older survey detail. For an inclusion history please see detailed notes in drawing 15980318.

This drawing is accompanied by a Site Plan and Elevations. Please see, drawings 16090618 Site Plan and 16090618 Elevations respectively.

Third floor detail is unchanged from drawing 15980318.

